

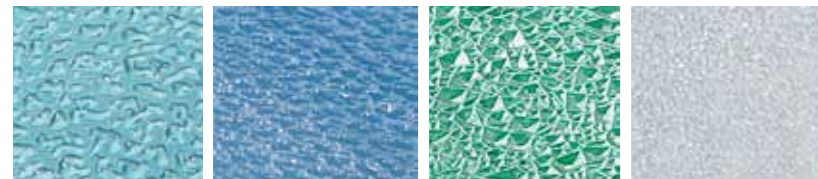
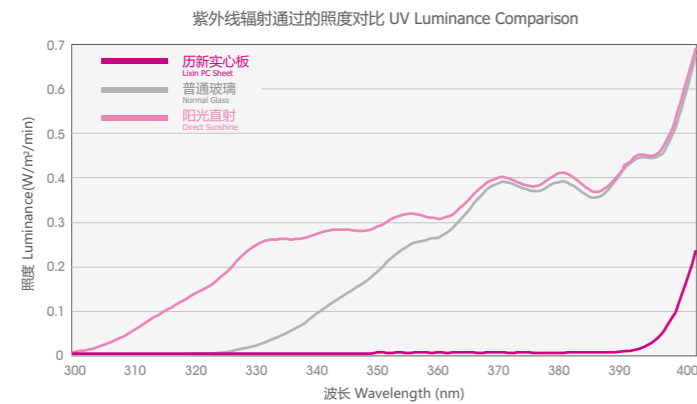
● 紫外线辐射保护 UV Protection

UV辐射对人体的危害!

长时间的暴露于紫外线的辐射下,会增加健康风险。添加UV的历新实心板能对光谱范围在270~320纳米的UV-A几乎完全屏蔽,同时大幅度减少UV-B的射入量,有效减少皮肤癌的发生,以及皮肤老化的症状。

Harmful UV radiations!

Longtime Exposure to UV radiation increases health risk. As the graph showed, UV-coated Lixin PC sheet could block almost all the UV-A rays with wavelength between 270-320nm and most UV-B rays. It effectively prevents skin aging and minimizes skin cancer risk.



水滴纹 Raindrop 荔枝纹 Pebble 钻石纹 Diamond 磨砂纹

历新颗粒板有多种纹路可供选择,包括钻石纹、水滴纹、皮纹、荔枝纹、粗/细磨砂、六角菱形纹、大/小棱镜纹以及凹形棱镜纹。各种纹路造型美观,颜色多样,表面防刮花,易维护,满足多种应用,尤其适合各类吊顶装饰、天窗采光、卫浴隔断、广告照明等应用。

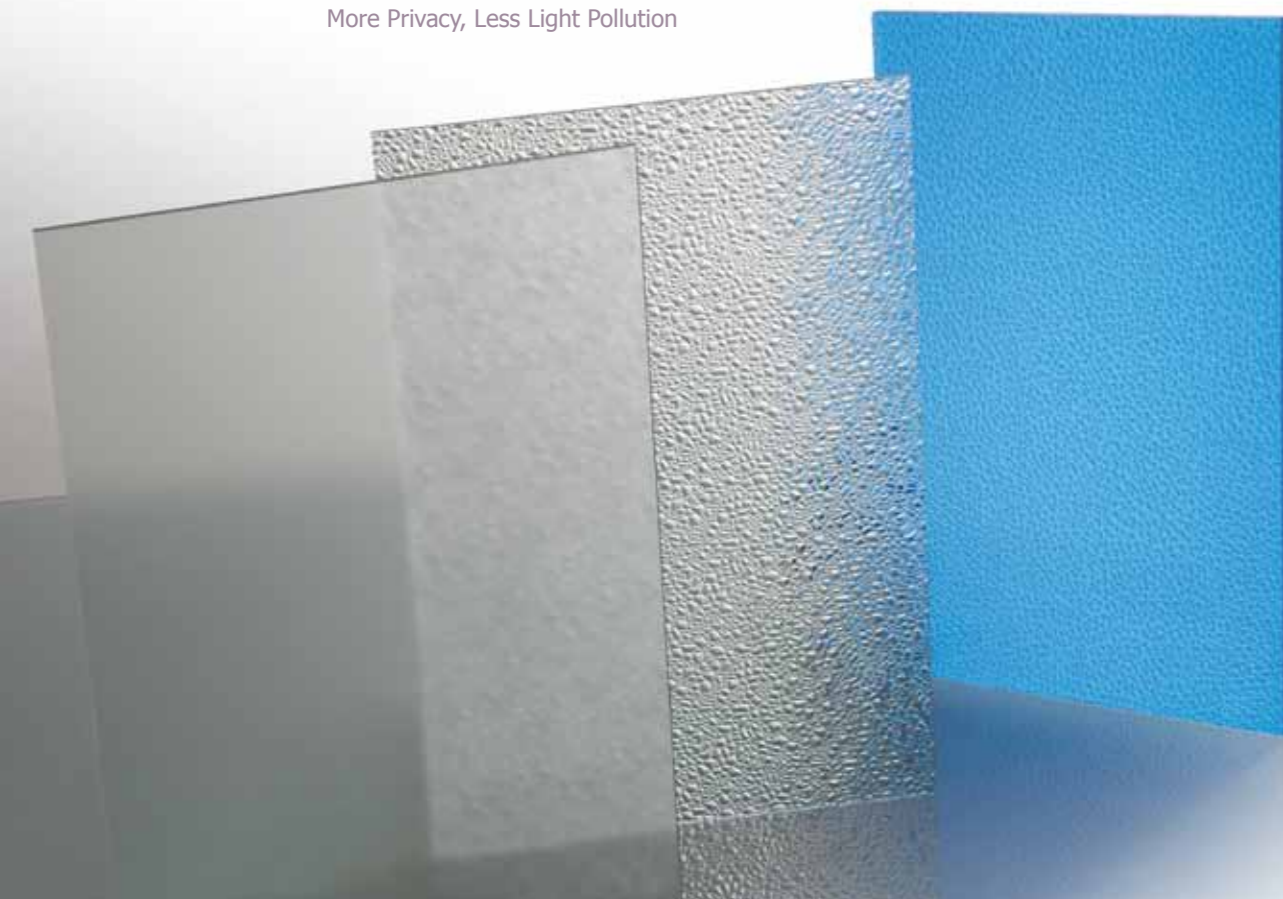
Lixin Embossed Sheet has many texture options including diamond, raindrop, leather, frosted and prismatic pattern etc. Owing to their unique patterns, rich textures, low maintenance requirement and superb finish, Lixin Embossed Sheets is an ideal choice for many applications ranging from industrial/commercial roofing to interior designing.

表面颗粒效果

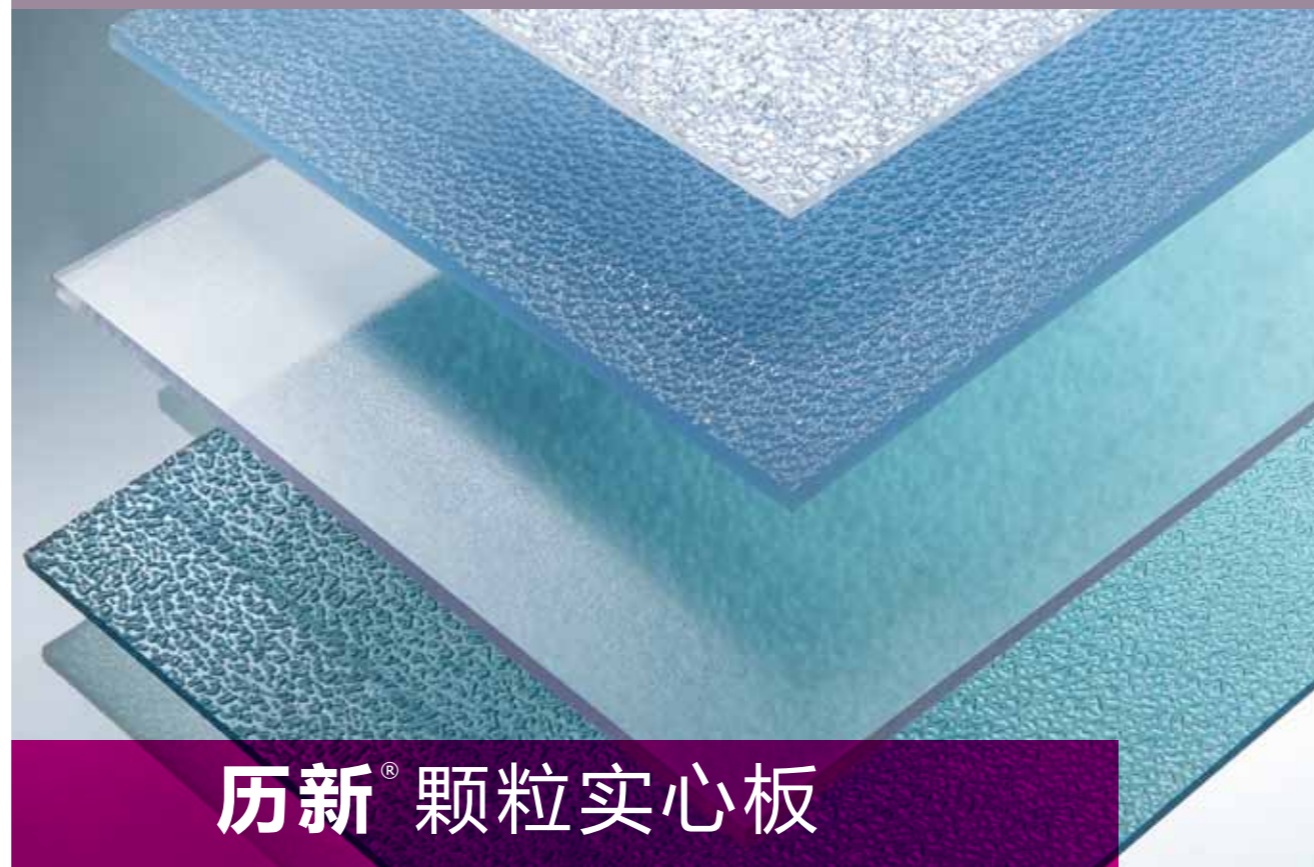
Embossed Surface

增强遮蔽性,减少光污染

More Privacy, Less Light Pollution



LIXIN Permanent Excellent Quality Just Need Time to Prove



历新® 颗粒实心板

Embossed Solid Sheet (LES)



Embossed 表面颗粒



Resistance to Impact 抗冲击



Beauty Appearance 绚丽观感



Light & Durability 轻质耐久



Sound Isolation 隔音



Ideas for Growth

先进采光节能方案的倡导者
Advocates of Advanced Lighting & Energy-saving



Ideas for Growth

LIXIN Permanent Excellent Quality Just Need Time to Prove

历新® 颗粒实心板

Embossed Solid Sheet



海宁市正兴耐力板有限公司

HAINING GENGIN PLASTIC SHEET CO.,LTD.

地址: 浙江海宁斜桥工业园区新光路6号

Add: NO.6 Xinguang Road, Xieqiao Industrial Park, Haining, Zhejiang, China

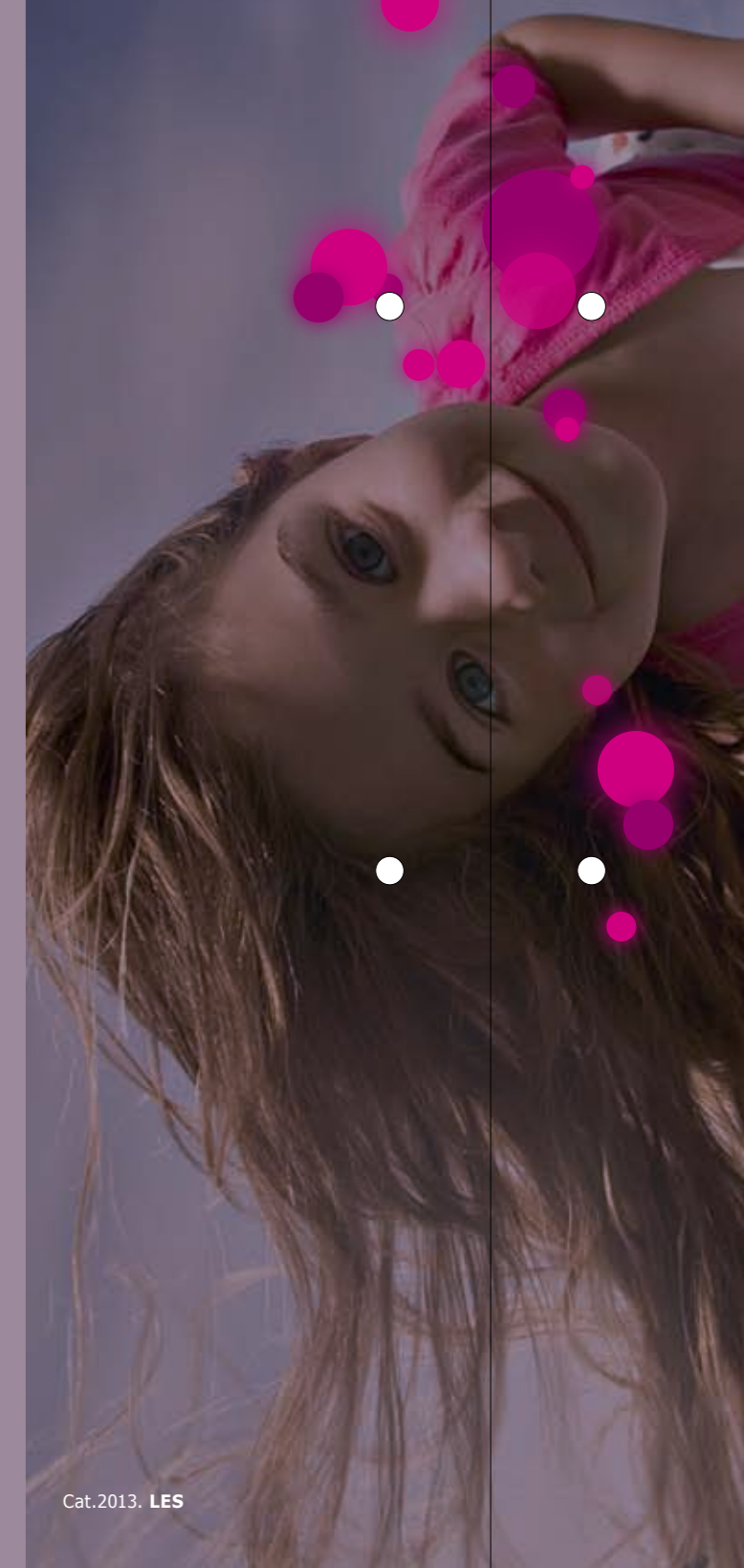
Tel: +86 573 87780888 Fax: +86 573 87781991

Hotline: 400 666 1197

Website: www.gensin.com email: gensin@gensin.com

产品责任条款:

本信息和我公司的技术建议,无论是口头的、书面的,还是以试验的形式,都是出于诚意而提供,对此,我公司并不作任何保证,这同样适用于涉及第三方所有的情形。我公司的技术建议并不免除贵方验证当前所提供的信息(特别是我公司安全资料和技术信息表中的信息),并对产品按照特定的工艺和用途进行适应性测试的义务。对产品的应用、使用和加工,以及按照我公司的技术建议由贵方生产的产品是我公司不能控制的,因此,完全是贵方的责任。我公司的产品依照我现行有效的销售与交付的一般条款进行销售。



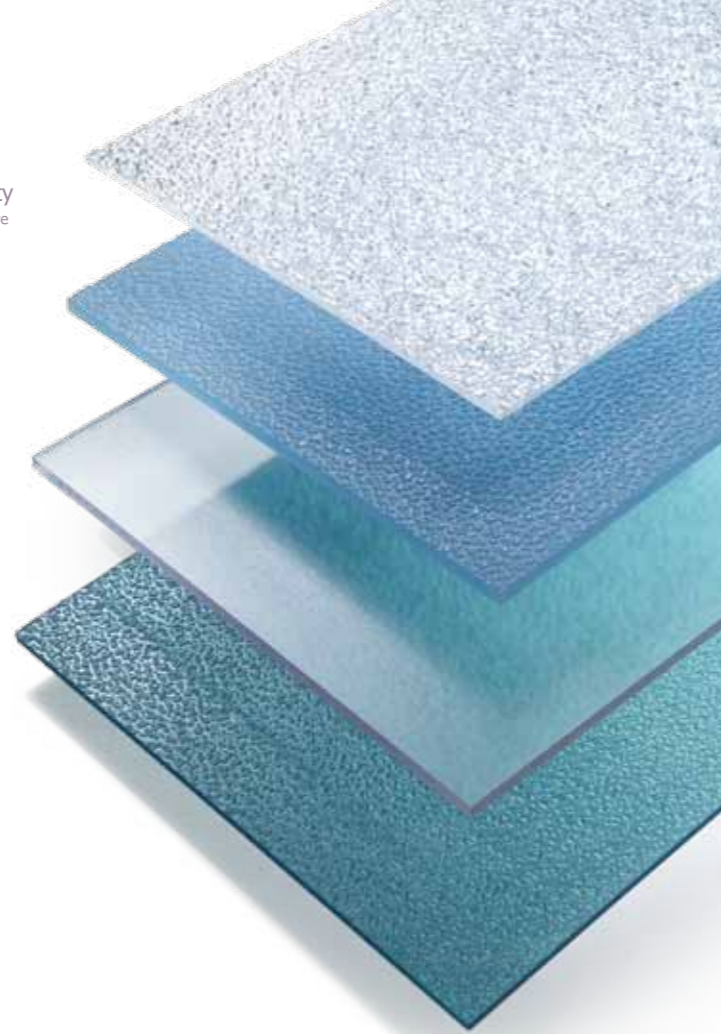
Cat.2013. LES

Lixin® Permanent Excellent Quality
Just Need Time to Prove

历新® 颗粒实心板 Embossed Solid Sheet

历新颗粒板属于聚碳酸酯实心板的一个分支，是单面有纹路的实心板。历新颗粒板表面的纹路一方面可以起到毛玻璃的效果，增强遮蔽性和隐秘性，另一方面对强光直射可以起到漫反射和散射作用，使光线柔和均匀，有效减少眩光和光污染。

Lixin Embossed Sheets are solid polycarbonate sheets with a texture on one surface. The purpose of texturing is to provide light diffusion and prevent see-through vision as deemed necessary for a variety of applications. These textures enable the diffusion of natural light streaming in along with ascertaining uniform dispersion of light over a large area.



Embossed
表面颗粒



Resistance to Impact
抗冲击



Beauty Appearance
绚丽观感



Light & Durability
轻质耐久



Sound Isolation
隔音

纹路多样，造型美观，颜色多样！

Various Textures,
Rich Colors, Amazing Appearance!

产品特点

- 轻质
- 保温防水
- 易于安装
- 抗冲击
- 美观实用

Product Features

- light weight
- Heat and water proof
- Easy to install
- High impact strength
- Beauty and user friendly

典型应用

- 卫浴设施
- 隔断屏风
- 室内装潢
- 采光照明
- 天棚吊顶

Typical Applications

- Bathroom
- Partition, Shelters
- Interior Designing
- Glazing, Lighting
- Canopy Roofing

产品规格 Production Standards

厚度 (mm) Thickness	标准宽度 Standard Width	标准长度 Standard Length	比重 Density	标准颜色 Color
1.5	1200-2100	6000mm 4mm 以下无限制 no length limit for sheets thinner than 4mm	1.2	透明
1.8				湖蓝
2				蓝色
2.5				绿色
3				茶色
4				乳白
5				
6				
8				
10				
12				

大批量用户，颜色和规格可定做 For large orders, color and size can be custom-made.

隔音效果(dB) Acoustic Insulation

厚度 Thickness	声音降低值 Sound Reduction Value
2	23
3	25
4	27
5	28
6	29
8	31
10	32
12	34

5 年使用效果对比

Comparison after 5 years usage



历新颗粒实心板表面外观：造型美观、颜色生动，没有发生透明度降低和黄变现象，历久如新。
Lixin embossed sheet surface: high clarity with vivid color, no aging or yellowing effect.



其它颗粒实心板表面外观：时间一久透明度明显衰退，并有黄变现象，颜色不如从前。
Other embossed sheet surface: decreased clarity with faded color and yellowing problem.

